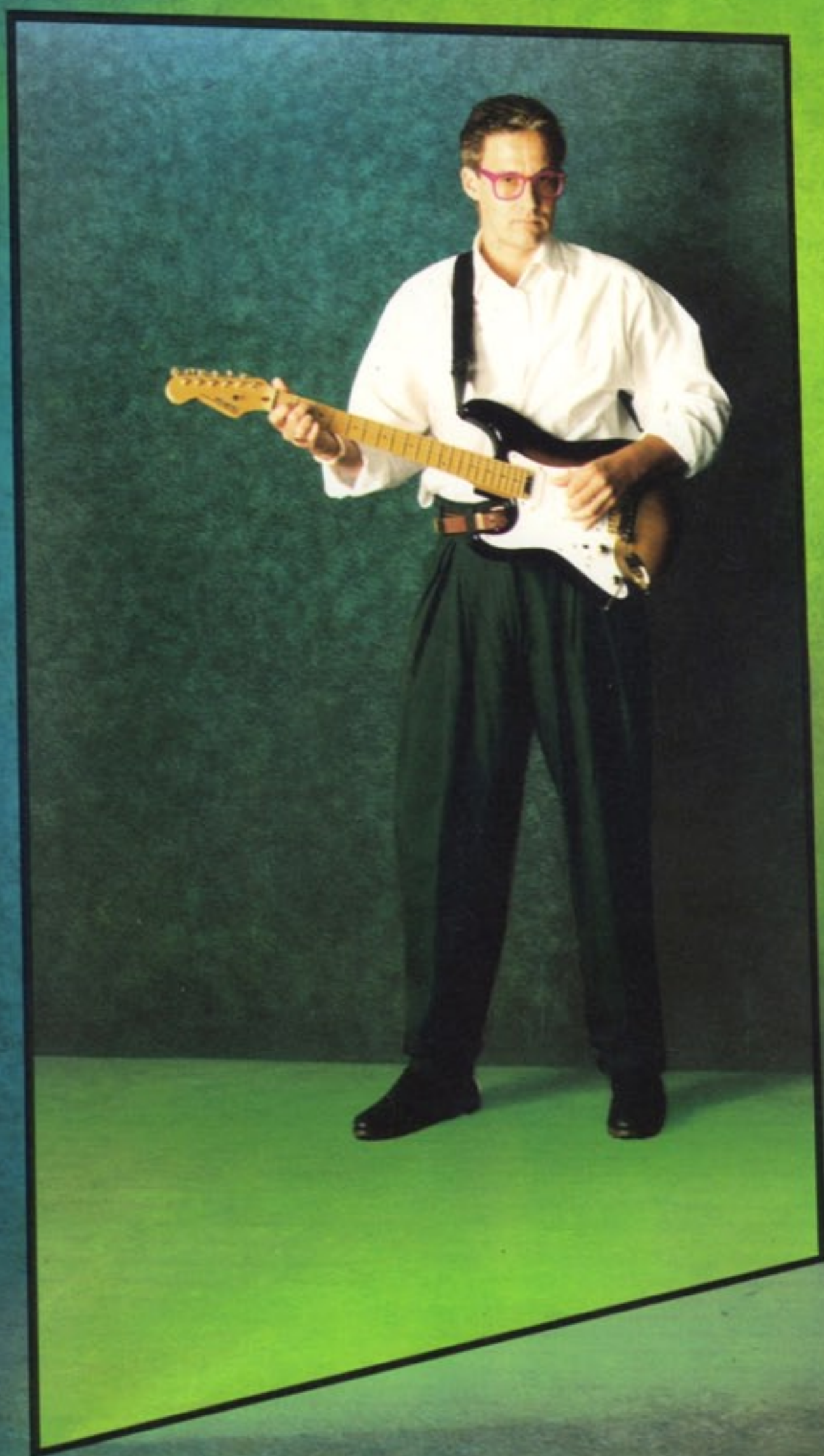
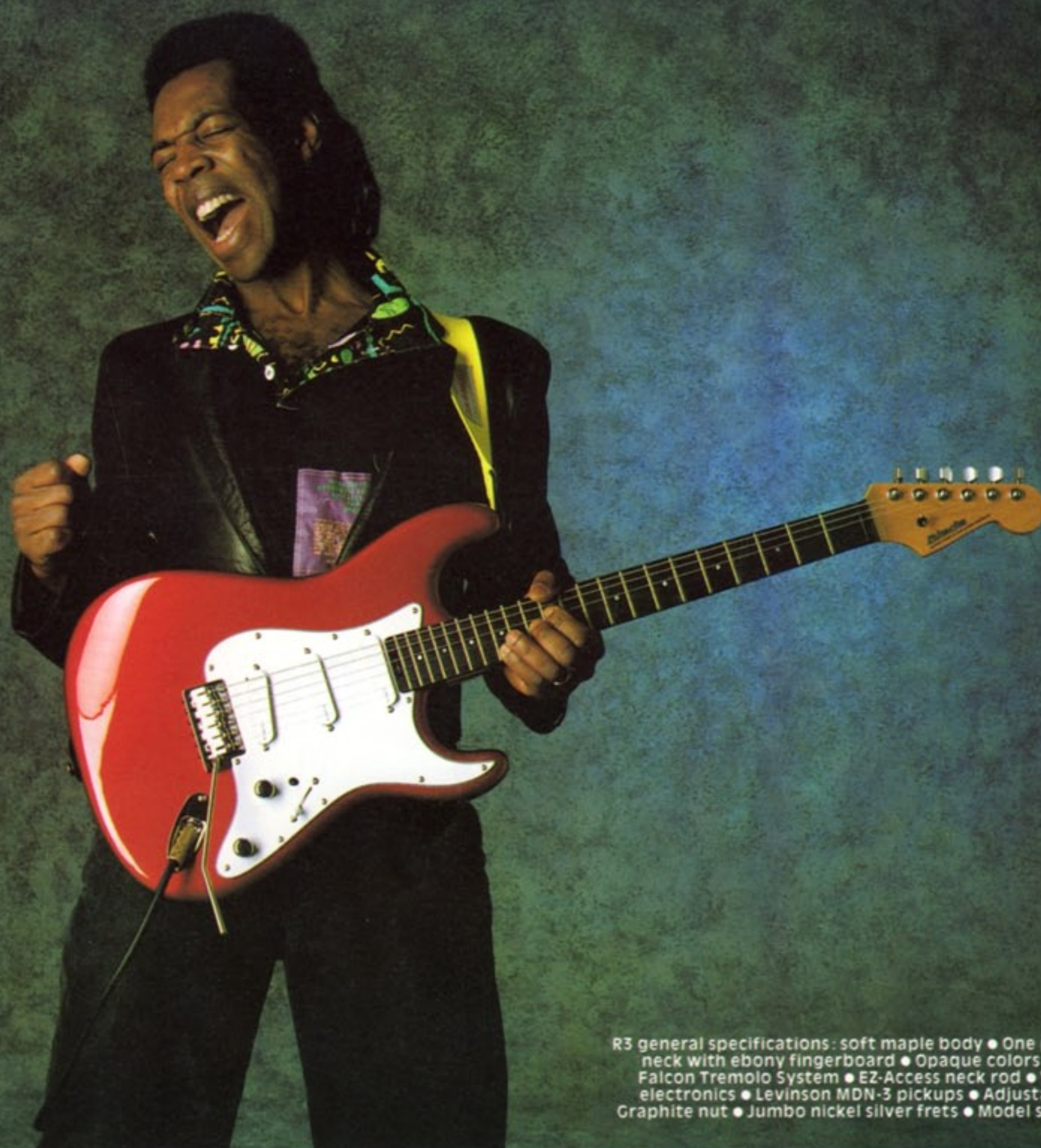


Blaade®



Levinson

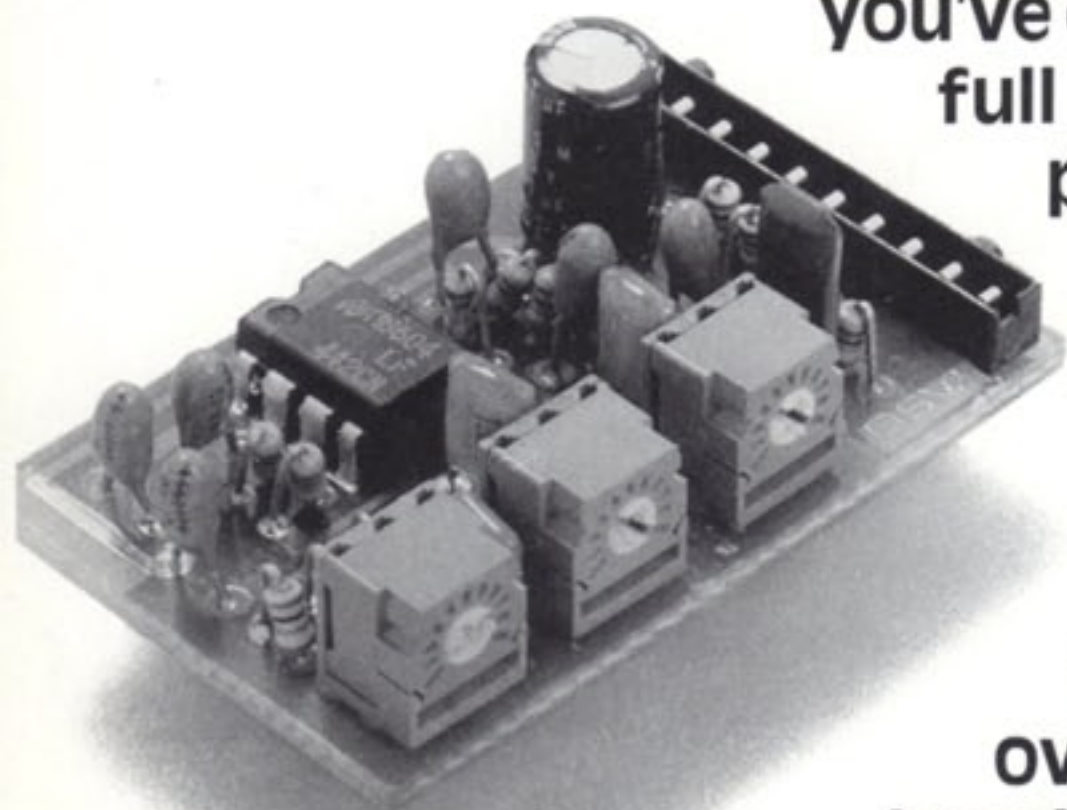
ADVANCED CONCEPTS BY
GARY LEVINSON, SWITZERLAND



R3

R3 general specifications: soft maple body • One piece maple neck or maple neck with ebony fingerboard • Opaque colors • Sperzel Trimlok tuners • Falcon Tremolo System • EZ-Access neck rod • Variable Spectrum Control electronics • Levinson MDN-3 pickups • Adjustable tension string guide • Graphite nut • Jumbo nickel silver frets • Model shown: R3 Candy Apple Red (CAR)

The Blade R3 exemplifies Blade philosophy: the union of classic design with State-of-the-Art technology. We've put a lot more sound into the Blade than you've ever heard in a guitar before. Transparent highs, full mids and clear bass characterize the Blade pickups. And traditional tonal boundaries have been vastly expanded through the unique on-board Variable Spectrum Control – VSC. The VSC uses adjustable active presets to broaden the traditional sound possibilities and functions for all pickup selections. Switch down into midrange boost for the kind of creamy overdrive or solid crunch you'd expect from a humbucker. Or switch up to the contour mode for crystal clear solos and dynamic rhythm chops. Three trimpots located on the rear of the instrument allow the musician to personally set these active sounds to his or her needs. The middle, bypass position brings you back to the classic vintage sound. Examples of sound possibilities are listed on the electronics description sheet. The Blade R3: Jazz to Metal, and much more...

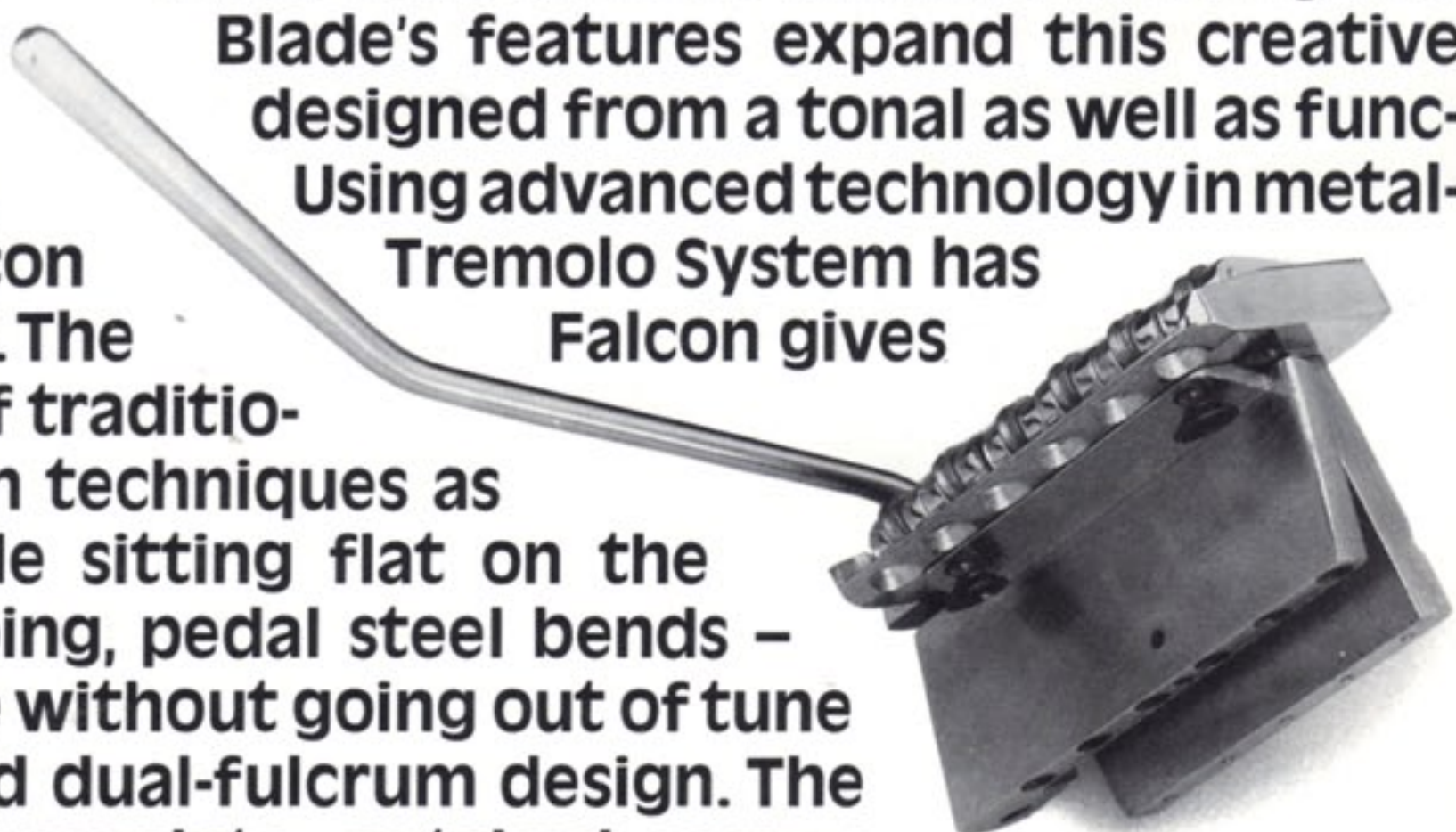




R4

R4 general specifications: light sen-ash body • One piece maple neck or maple neck with ebony fingerboard • See-thru colors • Sperzel Trimlok tuners • Falcon Tremolo System • EZ-Access neck rod • Variable Spectrum Control electronics • Levinson MDN-3 pickups • Adjustable tension string guide • Graphite nut • Jumbo nickel silver frets • Model shown: R4 Ocean Blue (OB)

Elegant, exclusive, exceptional. These are words that describe the Blade R4. The harmony of woods, lacquer, hardware and electronics maintains the vintage character of the most sought after instruments without limiting the creativity of today's musician. Blade's features expand this creative potential! Blade hardware is designed from a tonal as well as functional engineering standpoint. Using advanced technology in metal-urgy and engineering, the Falcon Tremolo System has been created for Blade guitars. The Falcon gives you all the tonal advantages of traditional systems but allows extreme techniques as high as three semitones while sitting flat on the top of the guitar! Palm damping, pedal steel bends – even a broken string is possible without going out of tune thanks to the unique, patented dual-fulcrum design. The knife-edged hardened steel baseplate, notched screws, saddle rollers and ergonomically molded stainless steel tremolo arm are among the features responsible for this extreme versatility. And there are no tools necessary to change strings! Blade features offer the innovative edge for the innovative musician.





RH

RH general specifications: all body and neck specifications like R3 • resp. R4 • Sperzel Trimlok tuners • Falcon Tremolo System • EZ-Access neck rod • Variable Spectrum Control electronics • Levinson MDN-3 single coil pickups and Levinson LH-4 humbucker • Adjustable tension string guide • Graphite nut • Jumbo nickel silver frets • Model shown: RH3 Black (B)

The RH models meet the needs of those musicians who demand the full-bodied warmth of a humbucker in the bridge position. They are available in the RH3 or RH4 versions. The humbucker is wound to give you the right balance of fatness and sustain with the brightness and midrange you need to cut through. Combined with the VSC it's a real scorcher! Blade guitars are constructed with one goal in mind – perfection. A guitar is the sum of it's parts – and each part of a Blade has been critically analysed. The Sperzel Trimlok machineheads use a patented housing construction that eliminates lateral post movement – the kind of movement that causes detuning.

The unique string locking mechanism stops string slippage and the staggered posts increase string pressure for superb sustain. The exclusive Adjustable Tension Guide lets you compensate for different string guages over the graphite nut to maximize sustain while minimizing friction. Combined with the Falcon Tremolo System these features let you wail without going out of tune – and without locking nuts or tools!





R2

R2 general specifications: soft maple body • One piece maple neck or maple neck with rosewood fingerboards • Graduated Levinson / Gotoh tuners • Custom vintage Synchronized Tremolo with hardened baseplate and saddle tracks • EZ-Access neck rod • Variable Spectrum Control electronics • Levinson MDN-2 pickups • Graphite nut • Jumbo nickel silver frets • Model shown: R2 Strawberry Fields Red (SFR)

A guitar is a very personal thing and the feel of the neck is an important aspect of its playability. You'll find Blade necks to be fast and friendly. The neck profile is designed to feel consistent along its entire length. You can bend notes as far as you like over the 320 mm radius fingerboard without them choking out on the nickel-silver jumbo frets. And the EZ-Access neck rod is accessible from the fingerboard allowing minute adjustments without the previously experienced problems. Most Blade guitars are offered with one-piece maple necks, maple necks with ebony fingerboards or figured one-piece maple necks (subject to availability). The choice is yours. The R2 features the same body and electronics as the R3 models. An improved synchronised tremolo has been engineered for this model utilizing a hardened steel baseplate and hardened, notched screws to insure operational smoothness and accuracy. The custom made machineheads feature staggered posts and are used in combination with the Adjustable Tension Guide. The R2 is available with a one-piece maple neck or a maple neck with rosewood fingerboard.





B3

B3 general specifications: soft maple body • Maple neck with ebony fingerboard • Opaque colors • EZ-Access neck rod • Silencer noise reduction system • Tonal character switch • Bass VSC electronics • Levinson JS-1 pickups • Adjustable tension string guide • Graphite nut • Jumbo nickel silver frets • Model shown: B3 Snow White (SW)

The lines are legendary. Perfect balance and positioning are reflected in this classic design. Now, coupled with Levinson technology, a new standard has been set – the Blade bass. The hardware is designed to retain the instrument's vintage character while increasing sound efficiency. The body has been tapered at the neck to improve access to the upper playing positions of the extended fingerboard. All contours are hand-formed, increasing the natural beauty of the elegant body shape. Traditional sound capabilities have been expanded through intelligently designed active electronics. The buffered balance control lets you pan between the pickups without gain differences. Supported by the circuitry, the master volume won't cut your highs when you cut the volume. A low pass filter has replaced the traditional tone control. This lets you roll off highs without muddying up the midrange. The Blade bass fulfills the wishes of the most discriminating bass players. It is available fretted with jumbo nickel-silver frets or fretless, with or without fretmarkers.

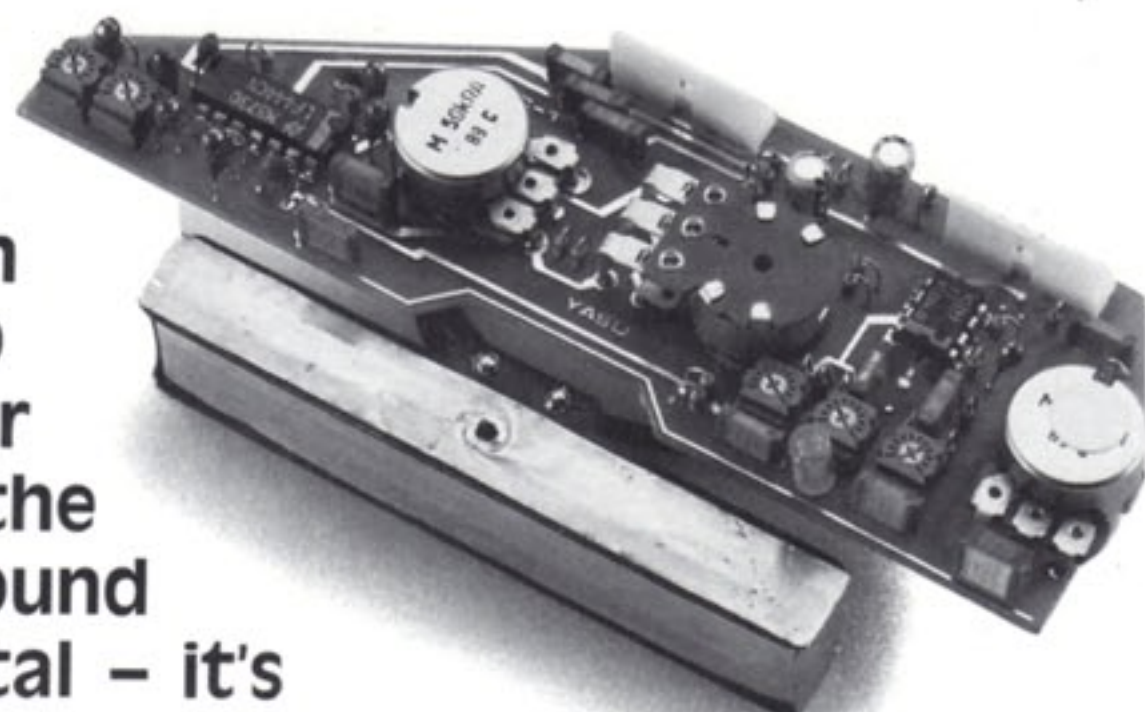


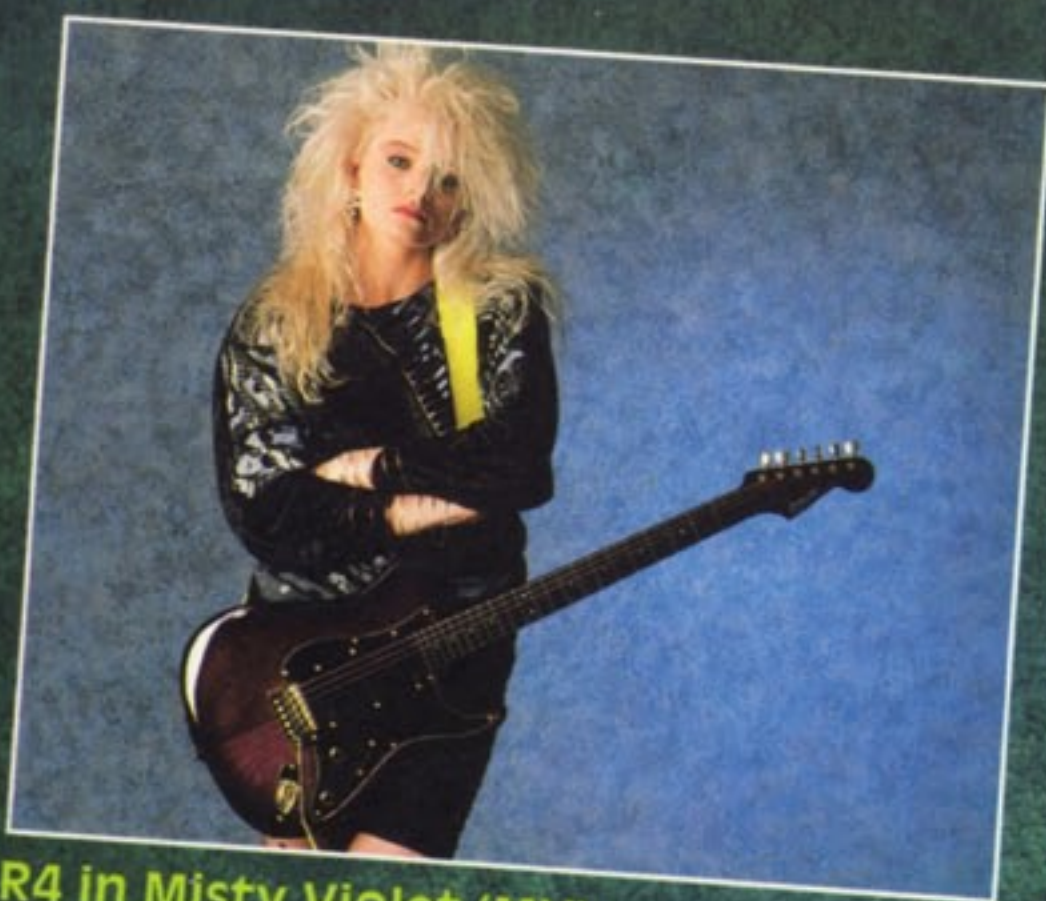


B4

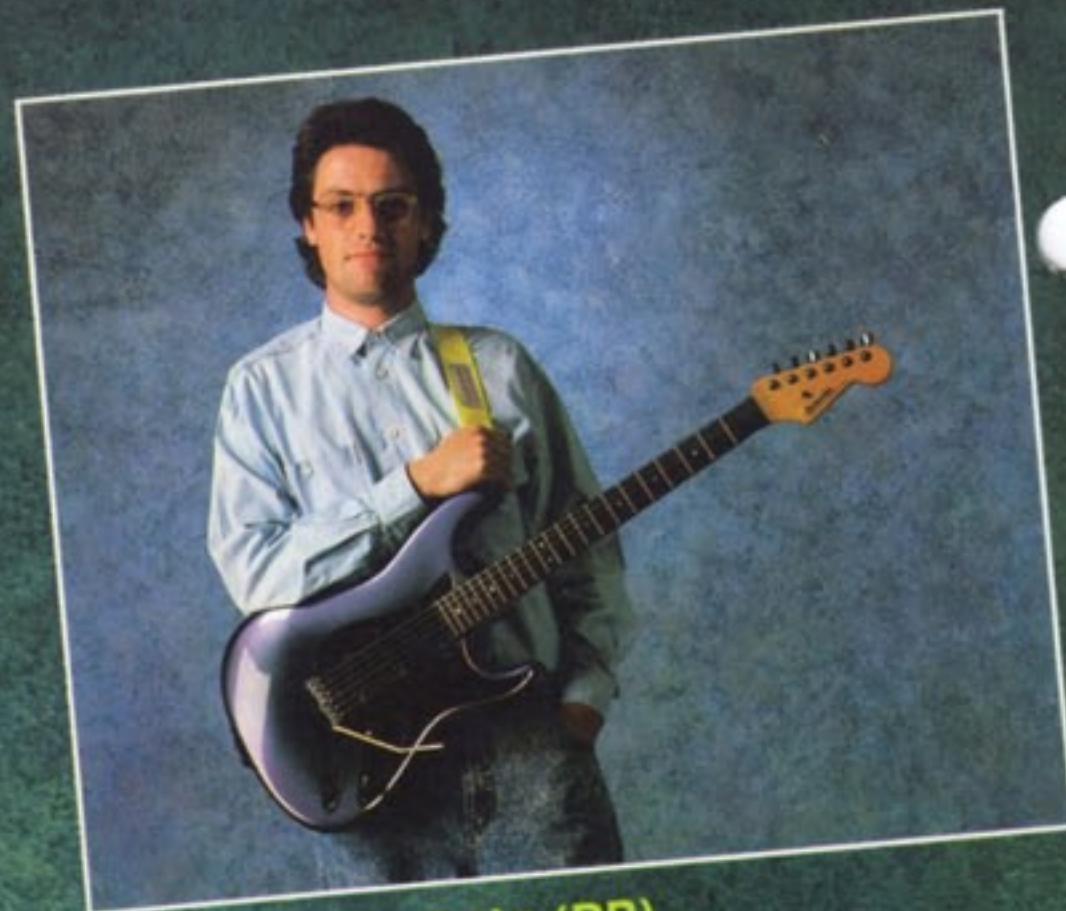
B4 general specifications: light white ash body • Maple neck with ebony fingerboard • See-thru colors • EZ-Access neck rod • Silencer noise reduction system • Tonal character switch • Bass VSC electronics • Levinson JS-1 pickups • Adjustable tension string guide • Graphite nut • Jumbo nickel silver frets • Model shown: B4 Honey (HN)

The master craftsmanship of skilled luthiers is immediately evident in the Blade B4. From the perfect fit of the neck joint to the cleanly routed control cavities, the Blade bass reflects the precision of a fine watch. The body finish is polished to a thin, beautifully hand-rubbed luster allowing the wood to resonate naturally. A specially formulated neck coating gives you the natural feel of oiled wood without the maintenance. The Silencer™ noise reduction system and integrated Bass VSC equalizer represent a breakthrough in sound technology. The unique growl of vintage single coils is back – but without the noise. The utilisation of trimpots allows you to tune any pickup to this circuitry thus further increasing your tonal flexibility. The Bass VSC gives you the capability of personally trimming the sound to your specific needs – Jazz, Funk or Metal – it's all there. The Tonal Character Switch, or TCS, activates a notch filter. This enables you to switch from the growl of high impedance pickups to the clean kind of sound you'd expect from low impedance pickups. Blade: Quality in conception, precision in detail.





R4 in Misty Violet (MV)



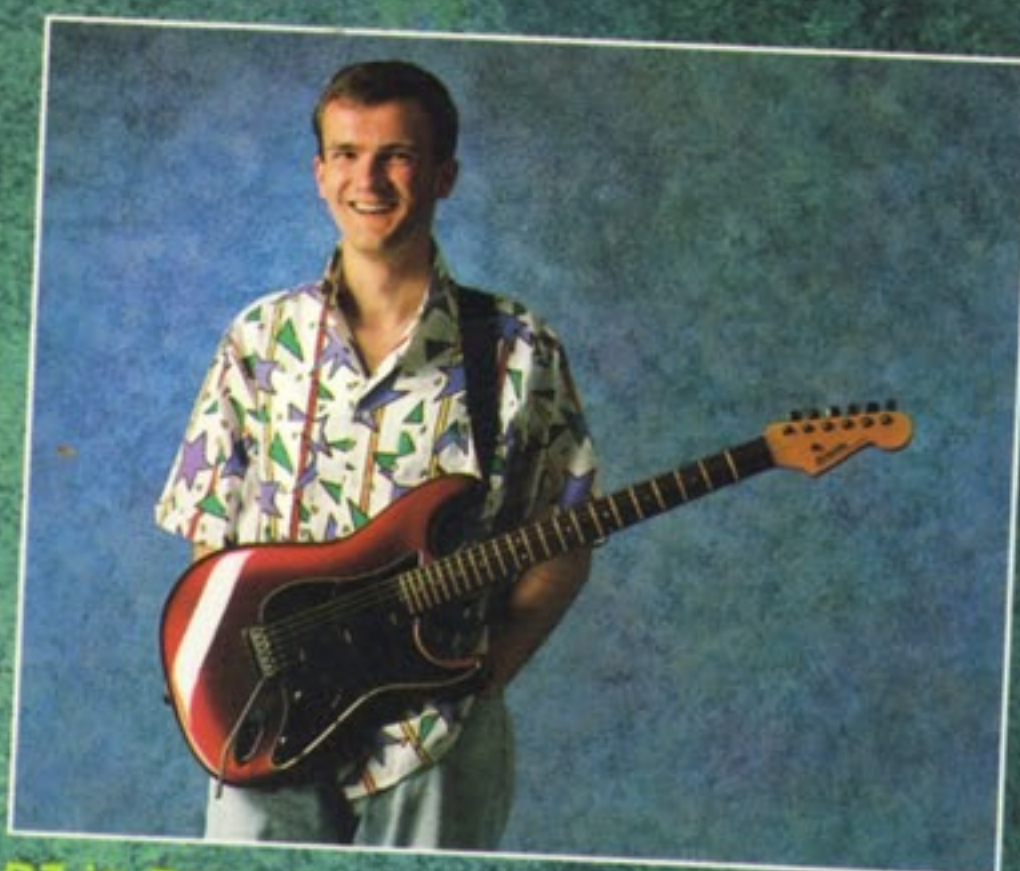
R3 in Purple Rain (PR)

Available Colors:

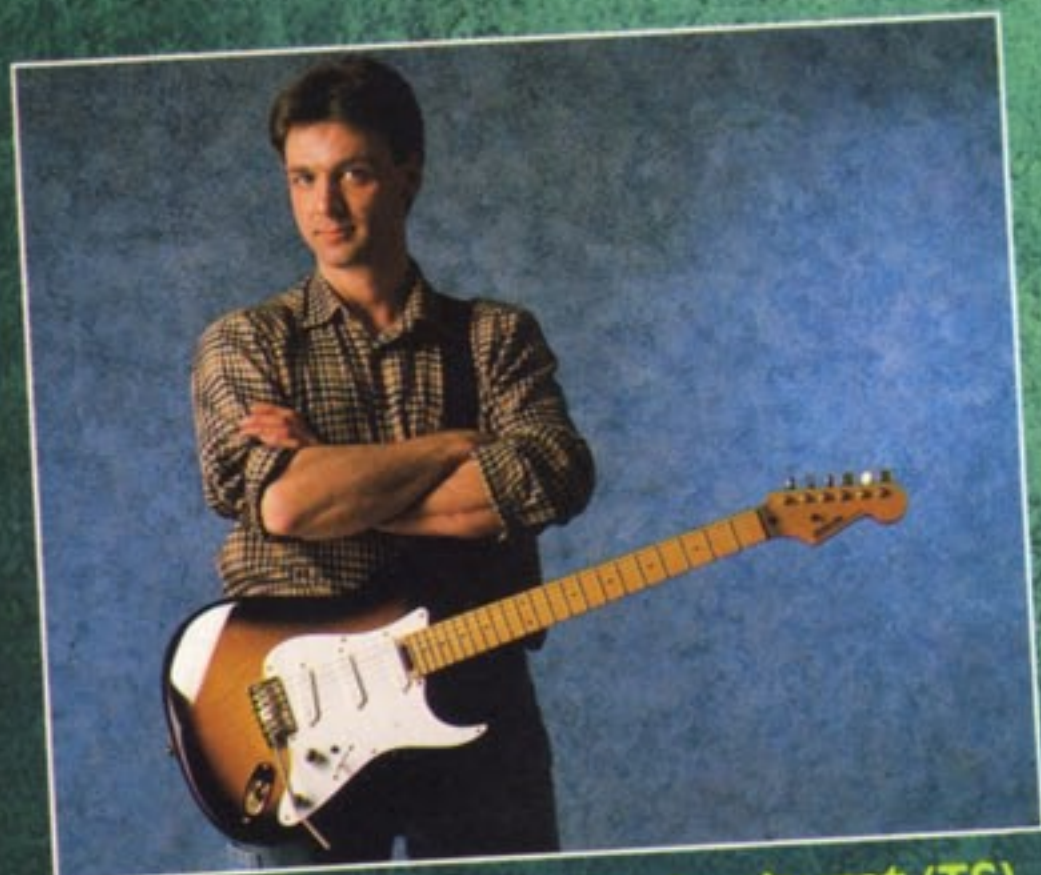
R2, R3, RH3, B3 Black, Snow White, Strawberry Fields Red, Candy Apple Red, Reverse Red Sunburst and Purple Rain

R4, RH4, B4 Misty Violet, Honey, Ocean Blue, See-Thru Red, Two-Tone Sunburst

(Availability may vary in some countries)



R3 in Reverse Red Sunburst (RRS)



R4 Classic in Two-Tone Sunburst (TS)



B4 in See-Thru Red (SR)

Your Blade Dealer

Concept and art direction: Gary E. Levinson
Graphic Design: Grafo Birsfelden/BL, Switzerland
Photography: Christian Lichtenberg, Basel, Switzerland